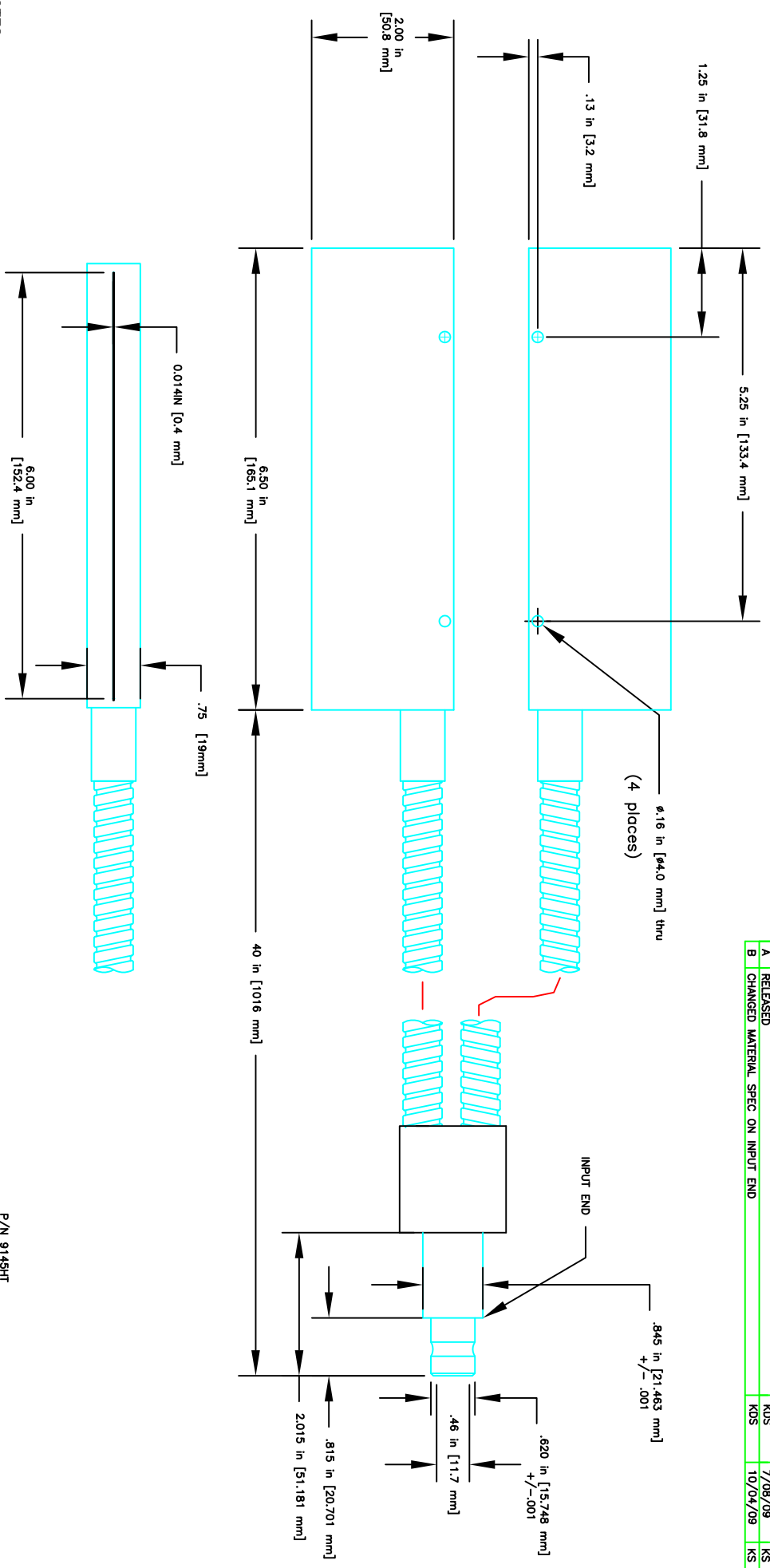


SYD	DESCRIPTION	REV	BY	DATE	APPROVED
A	RELEASED		KDS	7/08/09	KS
B	CHANGED MATERIAL SPEC ON INPUT END		KDS	10/04/09	KS

REVISIONS



P/N 9145HT

- NOTES:
- 1) FIBER: GLASS, 50 MICRON, <0.7dB/m
 - 2) HEAD MATERIAL: ALUMINUM
 - 3) FINISH: BLACK HARDCOAT
 - 4) HOLES: DRILL BEFORE ANODIZE
 - 5) SHEATH: FLEX STAINLESS STEEL
 - 6) UNIFORMITY: ±10%
 - 7) ALL FASTENERS TO BE SST.
 - 8) HIGH TEMP EPOXY TO BE USED.
 - 9) INPUT END TO BE MADE FROM ALUMINUM.

MAKE FROM:

UNLESS OTHERWISE INDICATED:
 INTERPRET PER ANSI/ASME Y14.
 DIMENSIONS ARE INCHES AND DO
 NOT INCLUDE APPLIED FINISHES,
 BRICK, SPIND, EDGES & CORNERS
 OF ALL PARTS UNLESS OTHERWISE
 SPECIFIED.

GENERAL TOLERANCES:
 3 PLACE DIMENSIONS: ±.005
 2 PLACE DIMENSIONS: ±.02
 FRACTIONS: 1/64
 1/32
 1/16
 1/8
 1/4
 1/2
 3/4
 1
 2
 3
 4
 5
 6
 7
 8
 9
 10
 11
 12
 13
 14
 15
 16
 17
 18
 19
 20
 21
 22
 23
 24
 25
 26
 27
 28
 29
 30
 31
 32
 33
 34
 35
 36
 37
 38
 39
 40
 41
 42
 43
 44
 45
 46
 47
 48
 49
 50
 51
 52
 53
 54
 55
 56
 57
 58
 59
 60
 61
 62
 63
 64
 65
 66
 67
 68
 69
 70
 71
 72
 73
 74
 75
 76
 77
 78
 79
 80
 81
 82
 83
 84
 85
 86
 87
 88
 89
 90
 91
 92
 93
 94
 95
 96
 97
 98
 99
 100

MACHINED SURFACES: $\sqrt{32}$

APPLICABLE SPECIFICATIONS:

THIRD ANGLE PROJECTION

DRAWING TITLE: IR Lightline, 6 in [152.4 mm] x .028 in [711.2 mm]

DRAWING NUMBER: 9145HT

DATE: 7/08/09

DESIGNED BY: KDS

CHECKED BY: KDS

APPROVED BY: KDS

DATE: 7/08/09

REL. DATE: N/A

SCALE: N/A

SHEET OF: 1/1

REV: SW

ILLUMINATION Technologies, Inc.
 Syracuse, NY USA

THIS DRAWING AND ITS CONTENTS ARE THE SOLE PROPERTY OF ILLUMINATION TECHNOLOGIES, INC. IT IS PROVIDED WITH THE UNDERSTANDING THAT THE INFORMATION CONTAINED HEREIN IS CONFIDENTIAL AND PROPRIETARY. NO REPRODUCTION OR TRANSMISSION IN ANY FORM OR BY ANY MEANS, ELECTRONIC OR MECHANICAL, INCLUDING PHOTOCOPYING, RECORDING, OR BY ANY INFORMATION STORAGE AND RETRIEVAL SYSTEM, IS PERMITTED WITHOUT THE WRITTEN PERMISSION OF ILLUMINATION TECHNOLOGIES, INC. OR ITS AUTHORIZED AGENTS.